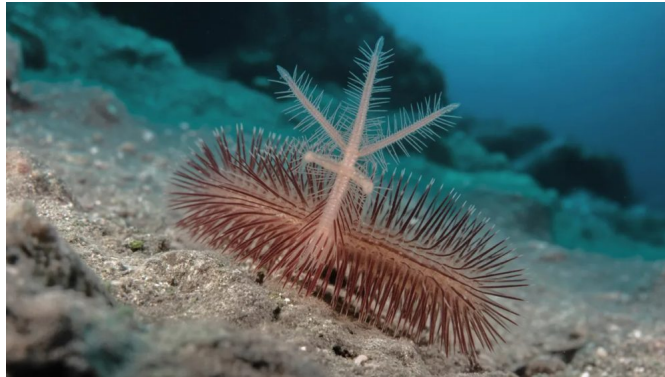


Animal Fact Sheet

Name: _____ Date: _____



Bristle Worm

Polychaeta (multiple species)

Bristle worms are a diverse group of segmented marine worms belonging to the class Polychaeta. These invertebrates are characterized by their elongated, soft bodies and numerous bristles (called chae...

Quick facts

Classification: Invertebrate

Family: various (e.g., Nereididae, Eunicidae, Amphinomidae)

Habitat: Ocean

Diet: Omnivore

Conservation status: Least Concern

Lifespan: 1-5 years

Weight: Less than 1 g to 50 g

Scientific name: Polychaeta (multiple species)

Did you know?

- Some bristle worm species can reach over 3 meters (10 feet) in length, making them among the largest marine worms.
- Bristle worms can regenerate lost body parts if injured. Some species are bioluminescent, producing light to attract mates or deter predators. The gr...

What I learned
