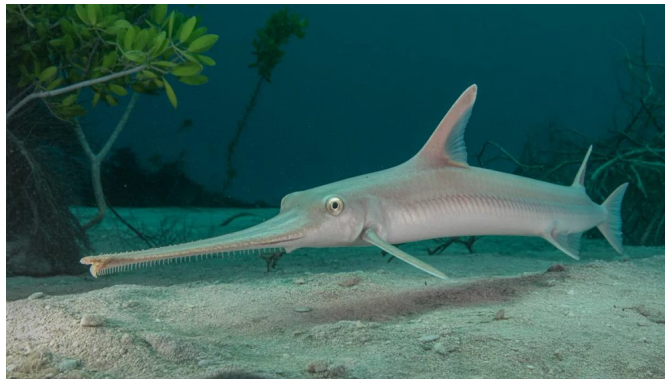


Name: \_\_\_\_\_ Date: \_\_\_\_\_



## Smalltooth Sawfish

*Pristis pectinata*

The Smalltooth Sawfish is a large, ray-like fish known for its long, flattened snout edged with sharp tooth-like structures, resembling a saw. This distinctive rostrum is used to detect and incapacit...

### Quick facts

**Classification:** Fish

**Family:** Pristidae

**Habitat:** Coastal marine and estuarine waters, often in shallow bays, river mouths, and mangroves

**Diet:** Carnivore

**Conservation status:** Critically Endangered

**Lifespan:** 30-60 years

**Weight:** 200-300 kg (440-660 lbs)

**Scientific name:** *Pristis pectinata*

### Did you know?

- The Smalltooth Sawfish's rostrum can make up nearly one-third of its total body length, sometimes exceeding 1.5 meters (5 feet) long.
- The saw-like snout of the Smalltooth Sawfish is packed with electroreceptors to detect hidden prey. Unlike sharks, sawfish give birth to live young, ...

### What I learned

-----

-----